

The Green Roots Project: Connecting Students to their World

Park Place Community Meeting
June 3, 2010



**The Environmental Charter School
at Frick Park**



Agenda



- Overview of the Environmental Charter School at Frick Park
- Preliminary Site Planning and Architectural Design
- Traffic Engineering
- Questions and Answers

**The Environmental Charter School
at Frick Park**



A Public Charter School



- An Accountable Organization
 - Federal No Child Left Behind Legislation
 - PA Department of Education
 - Pittsburgh Public Schools, Charter Authorizer
 - Local Board of Trustees
 - Local Taxpayers
 - Parents
- One of six charter schools in Pittsburgh
- A tuition-free school

The Environmental Charter School at Frick Park



Our People



Quality Human Resources

- Educators certified as “Highly Qualified” as defined by the state of Pennsylvania
- Supportive, active, and engaged parents committed to excellence
- Parent Community Organization (PCO) designed to integrate all stakeholders in quality public education for children

**The Environmental Charter School
at Frick Park**



Our People



- Environmental Focus Group

- A committed group of educators, parents, and community residents dedicated to the highest level of environmentally-focused initiatives



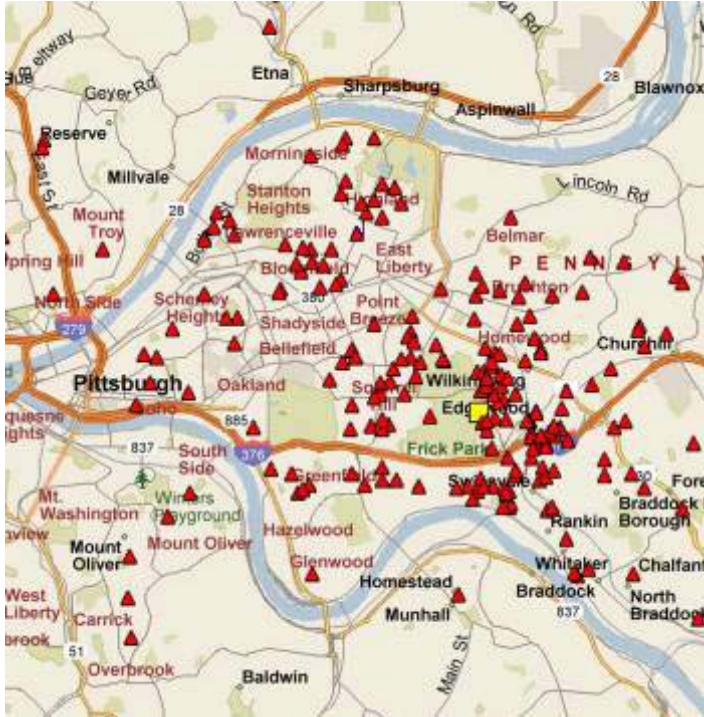
- Partners

- Pittsburgh Parks Conservancy
- Carnegie Mellon University
- Audubon Society of Western Pennsylvania
- Frick Environmental Center

**The Environmental Charter School
at Frick Park**



Our People



Students!

- Concentrated population of East End families
- Re-enrollment rate is 100% with a waiting list
- Students ranked strong in Pennsylvania Standardized State Assessment
 - 83% Proficient or Advanced in Reading
Pittsburgh average: 62%
State average: 77%
 - 81% Proficient or Advanced in Math
Pittsburgh average: 71%
State average: 82%

The Environmental Charter School at Frick Park



An Environmental Science, Place-based School



- Construct a strong science foundation
- Provide “Place-based” experiences
- Make meaningful connections between educational disciplines



**The Environmental Charter School
at Frick Park**



A Regional Asset



Why is the school a regional asset?

- ECS is the only school in western Pennsylvania with an environment and ecology focus
- ECS educates students around issues that are timely locally, nationally, and globally
- ECS is located in a city with a high “green profile”
- ECS strives to develop science leaders and problem solvers of the future

**The Environmental Charter School
at Frick Park**



The Green Roots Project at ECS



- Provide additional educational space to fulfill the intent of the charter to grow from K-4 to K-8
- Maintain proximity to Frick Park to reinforce place-based and environmental science-focused learning
- Maximize and enhance the relationship with the environment and the community

**The Environmental Charter School
at Frick Park**



Rothschild Doyno Collaborative Architecture and Urban Design



**The Environmental Charter School
at Frick Park**

Location



Park Place School



ECS at Frick Park

Park Place School

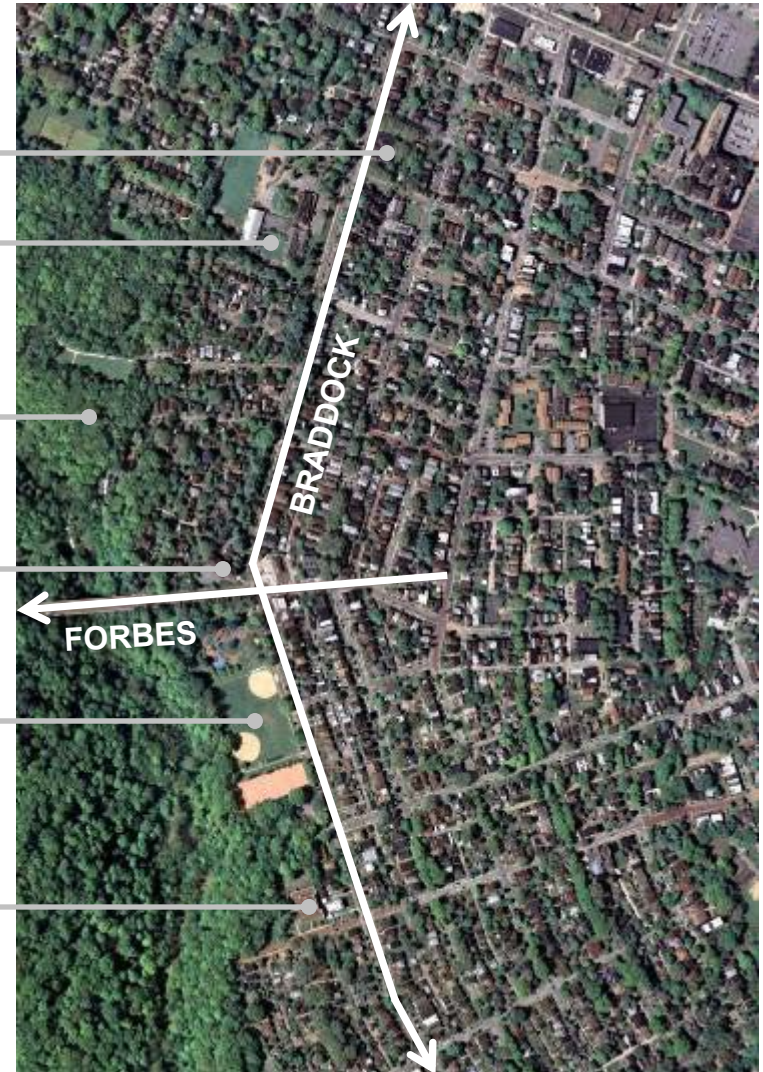
Shadyside Academy

Frick Park

Waverly Church

Frick Park ball fields

ECS at Frick Park



The Environmental Charter School at Frick Park



Park Place School



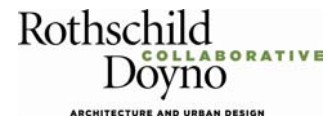
The Environmental Charter School at Frick Park



Park Place School



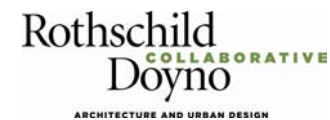
The Environmental Charter School at Frick Park



Park Place School



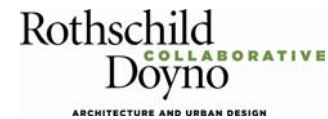
The Environmental Charter School at Frick Park



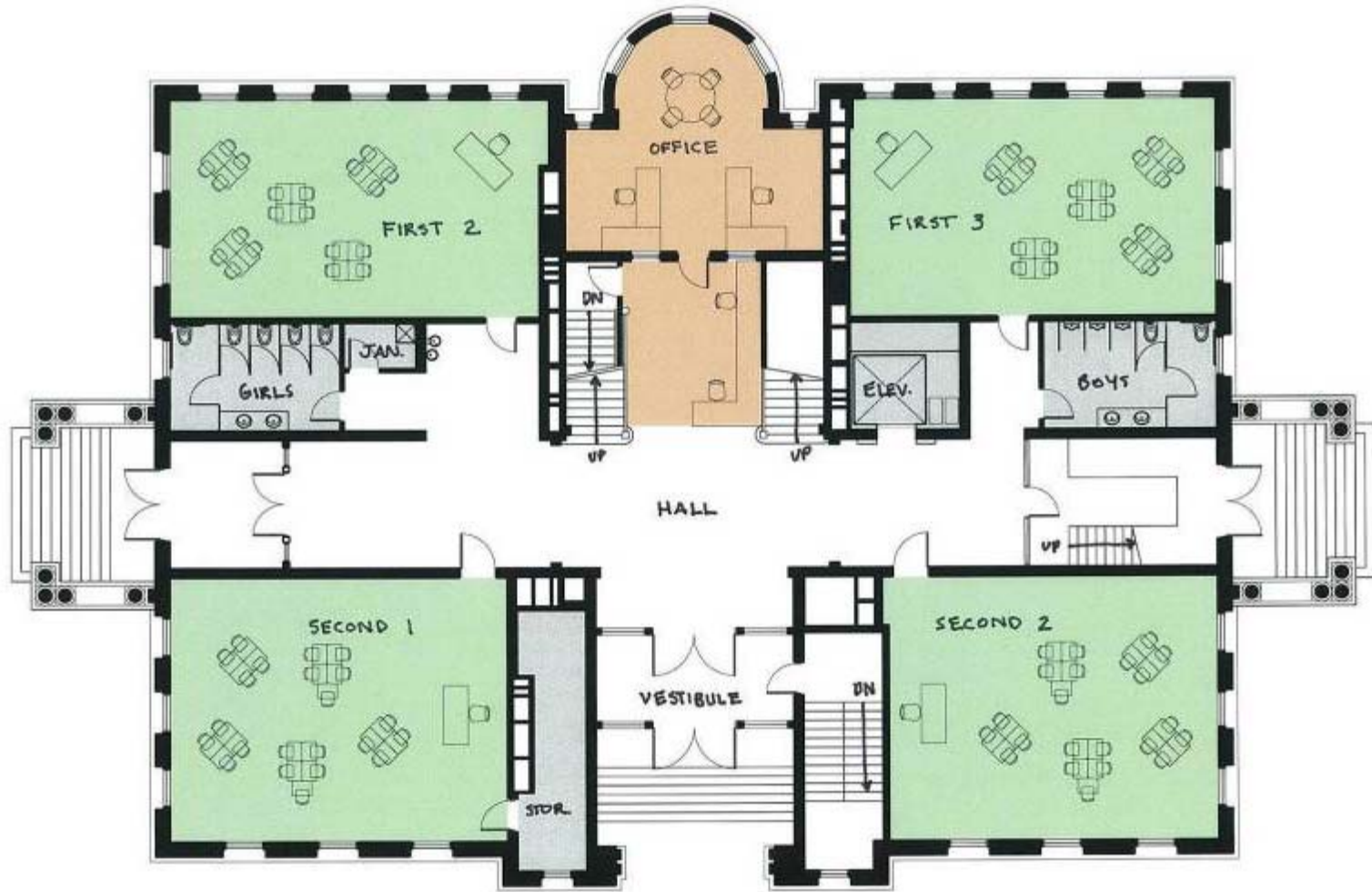
Second Floor Plan



**The Environmental Charter School
at Frick Park**



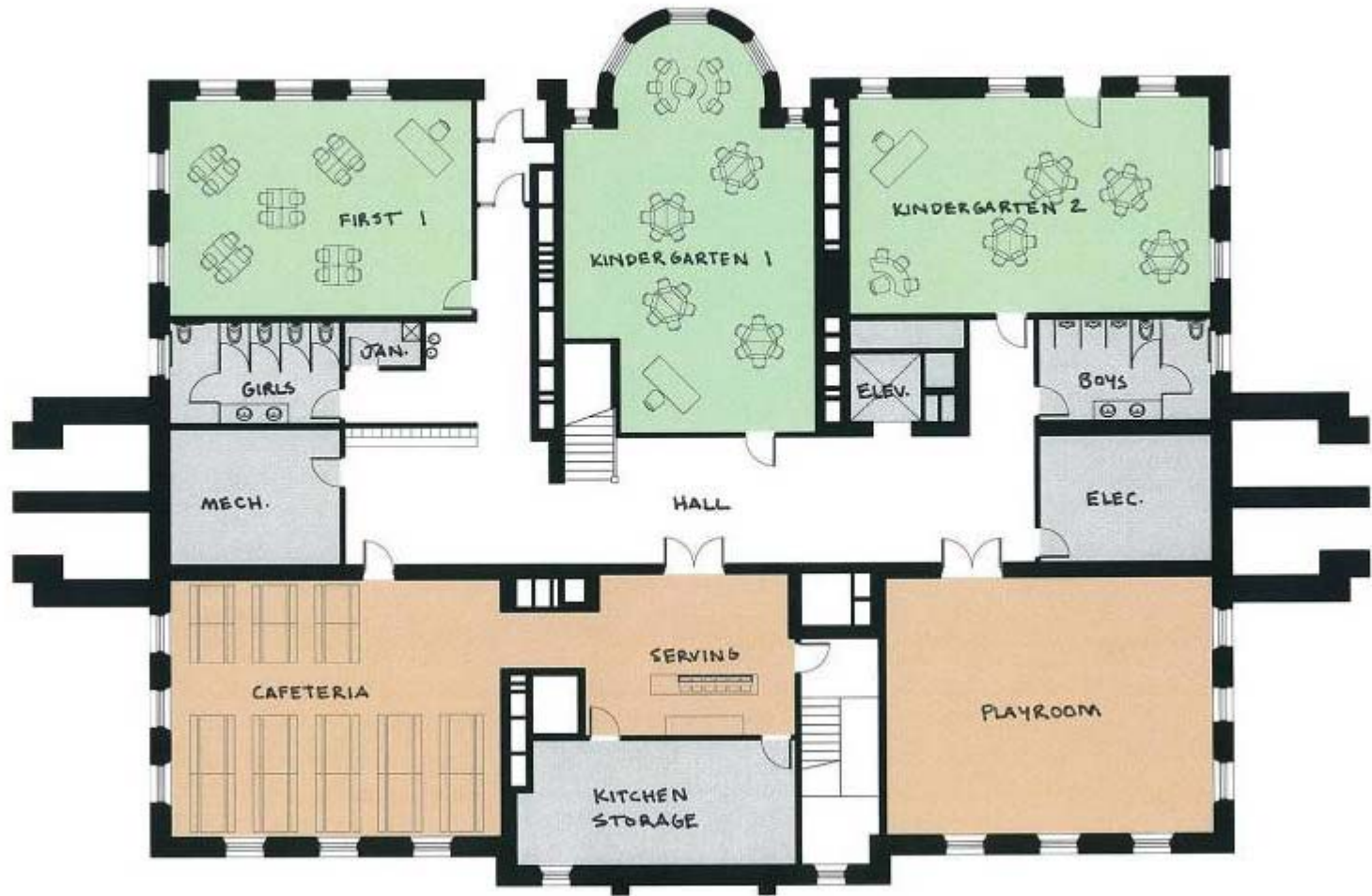
First Floor Plan



**The Environmental Charter School
at Frick Park**



Ground Floor Plan



**The Environmental Charter School
at Frick Park**



Preliminary Site Design

Kindergarten/ First Grade Activities

Outdoor Classroom Area

The seated area is formed by the natural slope of the hill in a semi-circular style.

Individual Learning Area

Tables and teaching board promotes a more individual based environment between students and teacher.

Gathering Space

A seated area focused around the steps, for a class sized porch activity.

Group Activity Area

Larger tables with more seating, engages students for group activities.

Outdoor Classroom Area

Outside seating for a breakaway space from the Group Activity Area, utilizing the existing flat green space.



Outdoor Science Classroom

A gathering space for classroom-sized learning and an interactive rain garden.

Second/ Third Grade Activities

Outdoor Play Area

Permeable pavers will be used for the surface of the flat open area. The tree will be utilized as a play structure with varying levels.

Pollinator / Crop Gardens

The tiered gardens will be areas for hands-on learning about horticulture.

Individual Learning Area

Tables and teaching board promotes a more individual based environment between students and teacher.

Gathering space

A seated area focused around the steps, for a class sized teaching.

Fencing

A four foot high, open design fence on the property line will prevent children from venturing off site.

Main entry

The main entrance will maintain its historic nature, and be framed on either side by landscaping.

Open Imaginative Play Area

Large flat grassy area for open play

Group Activity Area

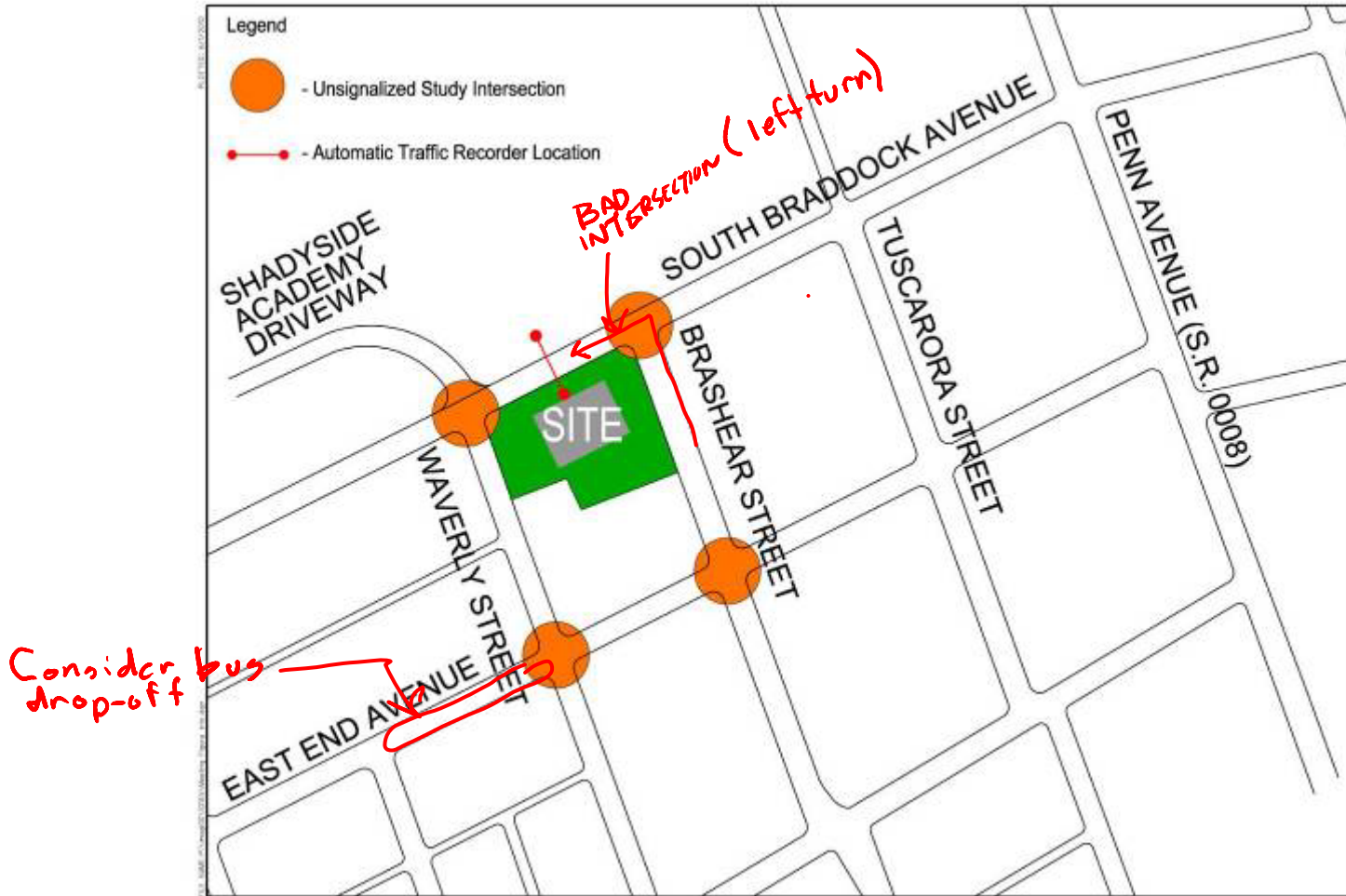
Larger tables with more seating, engages students for group activities. A teaching board is also attached to side of porch.

The Environmental Charter School at Frick Park

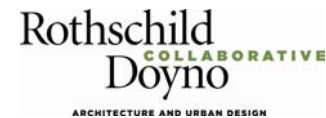


Trans Associates

Traffic Engineering



The Environmental Charter School
at Frick Park



Questions and Answers:

For further comments,
please see:

Jon McCann
Principal

**The Environmental
Charter School
at Frick Park**

Phone: 412.247.7970

Jon.McCann@imageschools.com



**The Environmental Charter School
at Frick Park**

